



[HOME](#) [DESTINATIONS](#) [SIGNATURE](#) [SAFARI PLANNING](#) [PRESS](#) [STORY](#) [PLAN YOUR TRIP](#) [SEARCH](#)



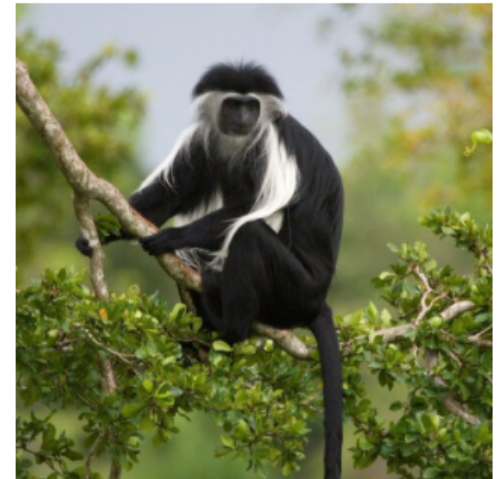
# UGANDA TRAVEL

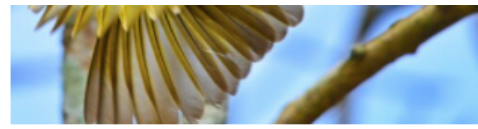
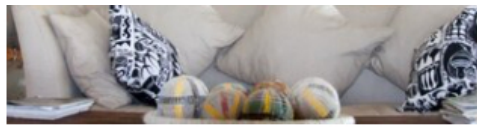
QUEEN ELIZABETH PARK & FORT PORTAL

RARE AND ENDANGERED WILDLIFE OF

# UGANDA

Imagine trekking into pristine rainforests to track endangered mountain gorillas and chimpanzees in the same week, taking part in a world famous conservation effort as you visit these spellbinding creatures in their natural habitat. Beyond the fascinating primate inhabitants Uganda is known for, the country is made up of diverse ecosystems that are home to Africa's most iconic animals including elephant, lion, leopard, zebra, hippo, giraffe, impala, crocodiles, and hundreds of other bird and mammal species. Traverse the equator and watch as the landscape changes dramatically from giant Lake Victoria, to the vast savannah grasslands of Queen Elizabeth National Park, to the dense rainforests of Bwindi Impenetrable National Park, to the tea plantations and red dirt roads of untouched rural villages, to the legendary Rwenzori "Mountains of the Moon." Grand adventures call for supreme relaxation, and there is perhaps nothing better than sipping a drink next to an evening bonfire, under a starlit sky, and thinking back on the day's surprising wildlife encounters: the silverback that nearly brushed past you as he broke out from behind the trees, or the chimpanzee who playfully tossed tree fruits at your feet, the hippos bobbing up and down next to your boat, the sound of giraffe and zebra swishing their tails just a few yards away as you explored the plains on foot. Uganda is a place for curious adventure seekers, for the kind of traveler who can appreciate the fragility of endangered species, the intensely beautiful scenery, the power of spellbinding cultural immersions with the gentle locals, the uniquely special luxury properties, and the importance of preserving unspoiled nature. The time to go is now, before the world wakes up to the magic of Uganda.





## WHAT WE LOVE

### TRACKING ENDANGERED MOUNTAIN GORILLAS:

This is a once in a lifetime experience that should float right to the top of your bucket list. Spend the day on foot, led by expert guides and trackers, and come face to face with the incredible creatures who mimic our own habits and movements so closely you'll be left in awe.

### MOUNTAIN GORILLA HABITATION EXPERIENCE

**MOUNTAIN GORILLA HABITUATION EXPERIENCE:**

Adventurous, fit travelers who are eager to participate in a wilder kind of adventure in Uganda's Bwindi Impenetrable Forest can join researchers and expert trackers in the work of habituating a family of gorillas, meaning they have not yet been regularly exposed to humans. After a long day of trekking over the most challenging terrain in Uganda, you'll spend four hours up close with the animals, rather than just one hour. Unpredictability and anticipation are part of the experience.

**CHIMPANZEE TRACKING:**

Explore the dense Kibale Forest National Park in search of wild chimpanzees. You'll know you're getting close when you hear their howls as they forage for, and then find, breakfast. In their presence you can marvel at the humanlike way they play and interact with one another.

**UNIQUE LUXURY LODGES:**

Uganda offers top notch accommodation options. Picture airy tented camps and cliffside cottages with plush beds and soaking tubs, picturesque infinity pools, and views of elephants crossing the plains as the sun rises. Sometimes you're nestled so far into the wild jungles and forests that gorillas or chimps might just show up on your doorstep!

**TREE CLIMBING LIONS:**

Strikingly beautiful Queen Elizabeth National Park is one of just two places in the world known for having tree climbing lions. This gigantic park is also home to over 600 bird species, hippo, elephants, leopard, lion, buffalo, and more. Both classic game drives and boat rides on the Kazinga channel are possible ways to see the wildlife here.

**TRIBAL INTERACTIONS:**

Bwindi Impenetrable forest was once home to the Batwa Pygies, a hunter-gatherer tribe who until recently lived only in the forests, far removed from civilization. Spend a day learning about their way of life, from their songs, dances, storytelling, honey gathering, and traditional herbal medicines.

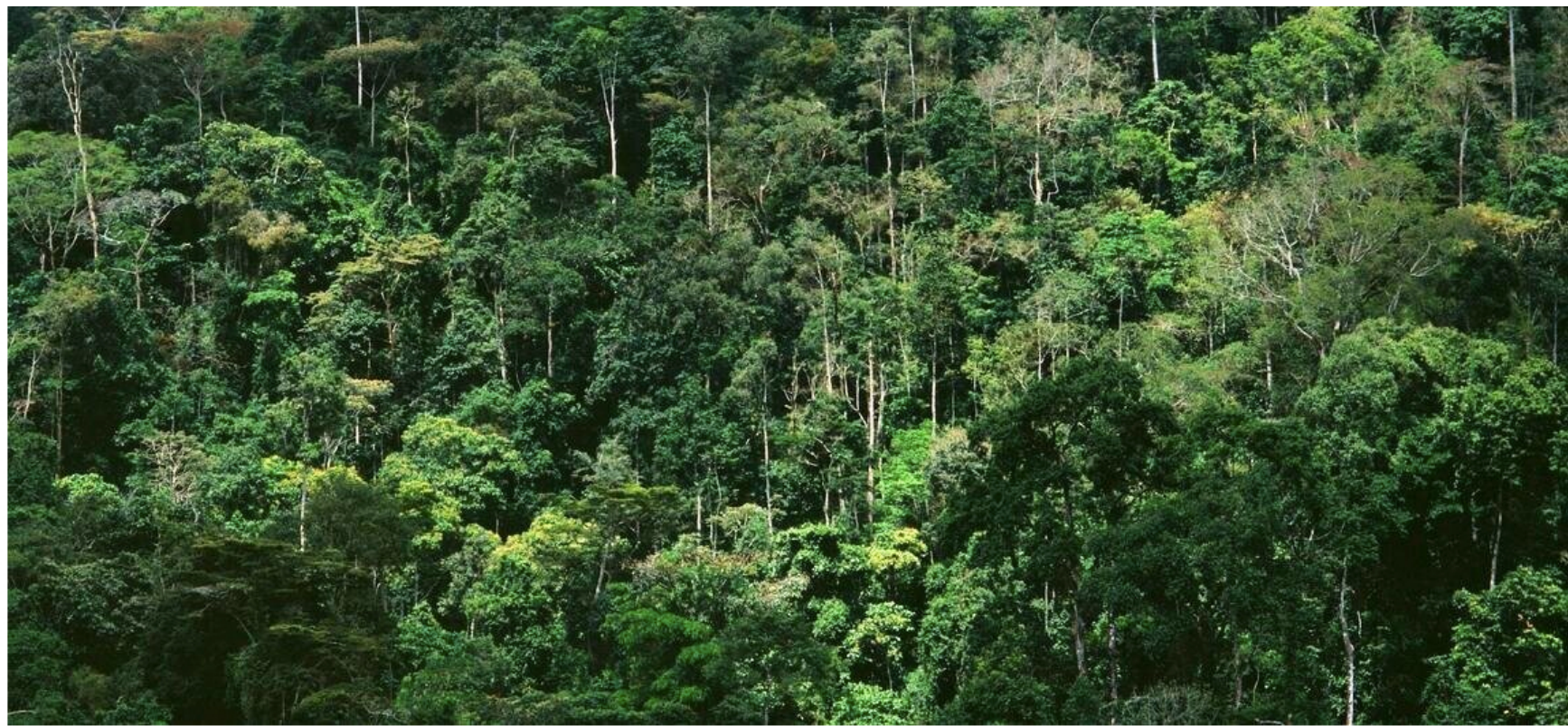
**WALKING OR HORSEBACK SAFARIS:**

Lake Mburo National Park, the smallest of Uganda's savannah national parks is home to wildlife including zebra, impala, giraffe, hippo, hyena, buffalo and more, but very few predators, which makes walking, biking, or riding on horseback both safe and thrilling!

**MURCHISON FALLS SAFARIS:**

Take a boat ride to the top of spectacular Murchison Falls, where the mighty Nile River rushes through an 8-meter wide rocky fissure and spills down 141 feet, creating a thunderous sound and a beautiful rainbow mist. Murchison Falls National Park is the country's oldest and largest conservation area and also includes grasslands where a huge variety of wildlife roam, including elephants, leopard, lion, hippos, waterbuck, crocodiles, giraffe, and even the occasional cheetah.





## REST & REJUVENATE

### OUR FAVORITE LODGES FOR TRACKING MOUNTAIN GORILLAS IN BWINDI IMPENETRABLE NATIONAL PARK:

**Gorilla Forest Camp:** *A luxurious tented camp on the edge of Bwindi Impenetrable forest, so close that it's not unusual for gorillas to wander through the property, Gorilla Forest Camp is a prime spot to start your unforgettable day of tracking these amazing animals. With just eight tents, the feeling is intimate and exclusive, and service here is exceptional. Excellent food, an on-call masseuse, a dedicated room attendant, a nightly bonfire with musical entertainment, and fully stocked bar ensure your time here is relaxing, giving you the chance to reflect on the day's incredible wildlife encounters. Gorilla Forest Camp is located within walking distance to Buhoma village where there are plenty of things to do, such as visit with village artists, take a guided a community walk or bicycle ride, or interact with the Batwa Pygmies.*

**Bwindi Lodge:** *Sit back and sip your sunset cocktail as you spot birds and monkeys from a deck with dramatic views of the forest canopy. At Bwindi Lodge, which was completely refurbished in 2018, eight secluded, spacious, thatch roof stone bandas are outfitted with beautiful four poster beds draped with gorgeous linens. Each has its own private balcony. Aside from being walking distance to a starting point for gorilla trekking, guests can partake in other activities including guided hikes to nearby waterfalls, a post-trek massage, and relaxing by the fireplace to share stories of your adventures. Guest at Bwindi Lodge are encouraged to venture into the nearby village to clink glasses and get a taste of local life at Bwindi Bar opened by the lodge as a social enterprise that trains and employs local youth.*

**Clouds Mountain Gorilla Lodge:** Considered one of the most luxurious lodges in eastern Africa, Clouds Lodge is aptly named, as it feels surrounded by a misty cloud forest. On a clear day guests are treated to views of some of the Virunga volcanoes including the glow of active Nyiragongo in the Congo. Each stone cottage has its own separate living fireplace and dedicated butler. With a location on remote forested ridge on the western edge of Bwindi Impenetrable forest, this is the best and most elegant property for travelers doing a gorilla habituation experience, which departs from just one corner of the national park.

#### OUR FAVORITE LODGES FOR TRACKING CHIMPANZEES IN KIBALE FOREST NATIONAL PARK:

**Ndali Lodge:** Ndali Lodge is a beautifully tranquil base from which to explore more than just Kibale Forest National Park, which is known as one of the best places in the world to spend a day tracking wild chimpanzees. Guests at Ndali are treated to breathtaking views of the Rwenzori mountains and crater lakes from individual cottages, from the infinity pool, from the various decks, outdoor loungers and hammocks sprinkled throughout the bucolic property. The huge estate encompasses its own small lake ringed by hiking trails, a coffee plantation, and a school, all of which are available for guests to experience. Ndali is deeply committed to supporting the local community.

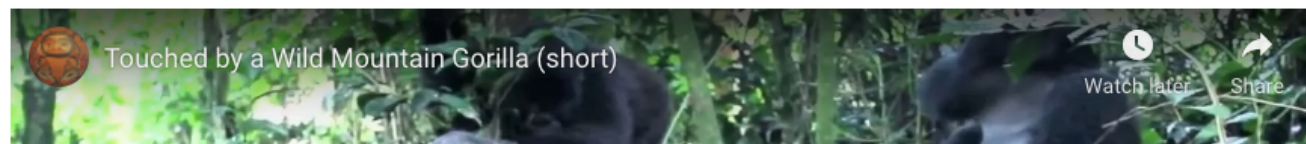
**Primate Lodge:** Rustic and airy Primate Lodge is situated within walking distance of the Kibale Forest National Park Visitor's center, which is the jumping off point for chimp tracking. Cottages are huge, with spacious decks that open up into the lush forest. The fire pit and open air library are lovely places to relax and soak in the enchanting woody atmosphere. This is the best place to stay for travelers on an express itinerary who only have one night to spend in this particular region.

#### OTHER LODGES NEAR UGANDA'S OTHER FAMOUS NATIONAL PARKS FOR SAFARI GAME DRIVES AND OTHER ADVENTURES:

**Kyambura Gorge Lodge:** A former coffee plant and shop, Kyambura Gorge Lodge has stunning panoramic views of Queen Elizabeth National Park and the famous Kyambura Gorge. This property stands out from some of the more traditional lodges with its contemporary, stylish design, and was completely refurbished in 2018. Guided forest walks, chimp tracking near the Gorge, game drives and boat rides to see elephants, hippo, buffalo and more wildlife, are all within a very short distance.

**Mihingo Lodge:** In a magical setting atop a dramatic rocky cliff, the circular infinity pool at Mihingo and main lodge area have breathtaking views of the rolling hills and grassy plains in Lake Mburo National Park. Request a sunrise coffee delivery to sip in the privacy of your huge deck...private, except for the animals who are drawn to the nearby watering hole and a salt lick as the morning comes alive with the sun! For travelers with mobility issues, there are a few tents located closer to the main lodge with less of an incline but some of Mihingo's tents will be inaccessible.

**Bakers Lodge:** The eight luxurious private cottages at Baker's Lodge sit on the banks of the Nile, raised up high on decks to maximize views of the rolling river. This is the best lodge from which to explore Murchison Falls National Park, home to abundant wildlife and the massive eponymous waterfall. Romantic and relaxing, this is a great spot to indulge in candlelit riverside dinners, bush breakfasts, and sundowners at the picturesque bar.





## WHAT TO KNOW

**Getting there:** There are international direct flights to Entebbe Airport from numerous cities, most notably London, Johannesburg, Nairobi, Istanbul, and Kilimanjaro. It is a 6 hour scenic drive between Entebbe and Fort Portal, or a 1-2 hour commercial flight or helicopter ride to many of the national parks.

**Physical Requirements:** Uganda's Bwindi is known for its high altitude and challenging terrain. A reasonable level of physical fitness is recommended for trekking. Although the terrain is steep in Bwindi, there are porters available for hire who can make the trek much easier. Good way to support the community. The minimum age for gorilla trekking is 15, but younger children are welcome at most lodges.

**Planning ahead:** Gorilla permits are extremely limited, so planning far in advance is advised. For each permit you have one day of trekking and a maximum of one hour with the animals, but these are wild animals and the experience is somewhat unpredictable! For this reason many travelers opt for two days/two permits to more closely ensure a dynamite experience.

**When to go:** travel in Uganda can be pleasant year round, with a rainier low season in April, May, and November.



## SAMPLE ITINERARY

### DAY 1: FORT PORTAL'S CHIMPS

Meet your private guide at Entebbe Airport. Embark on a six-hour journey to Fort Portal, the gateway to the towering Rwenzori Mountains. Enjoy a picnic lunch en route and continue to Kibale National Park, a rainforest that is home to a remarkable 13 primate species, including its famous chimpanzees, the very localized red colobus monkeys, and the L'Hoest's monkeys. Arrive late in the afternoon at either Ndali Primate Lodge or Primate Lodge, both of which are set stunningly amidst the Bunyaruguru crater lake region of Western Uganda. Relax at the lodge or explore the nearby crater lake. Overnight at Ndali Lodge or Primates Lodge.

### DAY 2: FORT PORTAL'S CHIMPS

After an early breakfast, depart the lodge to track the noisy but elusive chimpanzees, and try to spot other primates crashing around through the high canopy of the forest. In the afternoon, take a walk to visit various communities projects in the area. Relax at the lodge or explore the nearby crater lake. Overnight at Ndali Lodge or Primate Lodge.

### DAY 3: QUEEN ELIZABETH GAME PARK OR THE RWENZORI MOUNTAINS

Walk the foothills of the Rwenzori, looking out for its forbidding peaks in the distance. Alternatively, head straight for Queen Elizabeth National Park, which boasts one of the highest biodiversity ratings of any game reserve in the world. Time permitting, go for an evening game drive where you may see elephant, kob, buffalo and more. Overnight at Kyambura Lodge and enjoy a relaxing drink overlooking the vast savanna of Queen Elizabeth National Park while spotting wildlife.

### DAY 4: QUEEN ELIZABETH GAME PARK

After breakfast, head to Kyambura Gorge to track the fast moving chimpanzees; man's closest living relatives. Alternatively, go for a nature walk to spot other primates, including beautiful black and white colobus monkeys. In the afternoon, take a boat cruise along the Kazinga Channel. This is one of the best ways to get up close to hippos, crocodiles, and a vast array of birds. This is possibly the best opportunity to see bird life in Uganda. Big game also drink by the channel- elephant, Ugandan kob, buffalo and lions. Overnight at Kyambura Lodge.

### DAY 5: BWINDI IMPENETRABLE FOREST

After breakfast, depart on a 3 hour drive to Bwindi National Park, an ancient rainforest with roughly half of the worlds remaining mountain gorillas. Either drive via Ishasha, home of the tree-climbing lions (roads permitting), or take the alternative route through cultivated expanses. Arrive at Bwindi Lodge overlooking the primeval Bwindi forest, which is home to gorillas, monkeys, chimpanzees, and birds. Sit on the terrace jutting out into the forest and take in the exotic sights and sounds. In the late afternoon stroll in the thick forest rich with birds, butterflies and monkeys, or just relax on the lodge terrace. Overnight at Bwindi Lodge.

### DAY 6: BWINDI IMPENETRABLE FOREST

After breakfast, go gorilla tracking in Bwindi Impenetrable National Park, a UNESCO World Heritage Site. Track the mountain gorillas up the densely forested hills. Visit with one of four gorilla families living in the forest and watch them climb, play, and eat. Gorilla tracking in Uganda can be a longer day than Rwanda since the rainforest is so thick. If your gorilla expedition ends mid-day, spend the afternoon in the surrounding villages. Maybe visit a traditional medicine man, learn how banana gin is made or visit a conservation or humanitarian project. Alternatively, you can also spend the day with the Batwa pygmies, see their local dance and even use their bow & arrows. Wind down with an early evening massage. Enjoy the views and sounds from the lodge terrace or walk the river trail. Overnight at Bwindi Lodge.



views and sounds from the lodge terrace or walk the river trail. Overnight at Bwindi Lodge.

## DAY 7: KAMPALA

After breakfast, embark on an 8 hour drive to Kampala through the lush green striking landscapes. Enjoy a picnic lunch and arrive at bustling Kampala late that afternoon. Kampala is approximately 23 miles from the Entebbe International Airport.

---

### MORE ON UGANDA

[WHAT TO PACK FOR A GORILLA TRACKING SAFARI](#)

[SIGNATURE EXPERIENCES BY EPIC ROAD](#)

[TOP NATURAL WONDERS OF AFRICA](#)

[TOP 10 AFRICAN FAMILY SAFARI LODGES](#)

[BEST DOCUMENTARIES ON AFRICA](#)

[TOP 5 THRILLING AFRICAN SAFARIS](#)

